



ZING365
Learning without limits

CII Exam Support Options

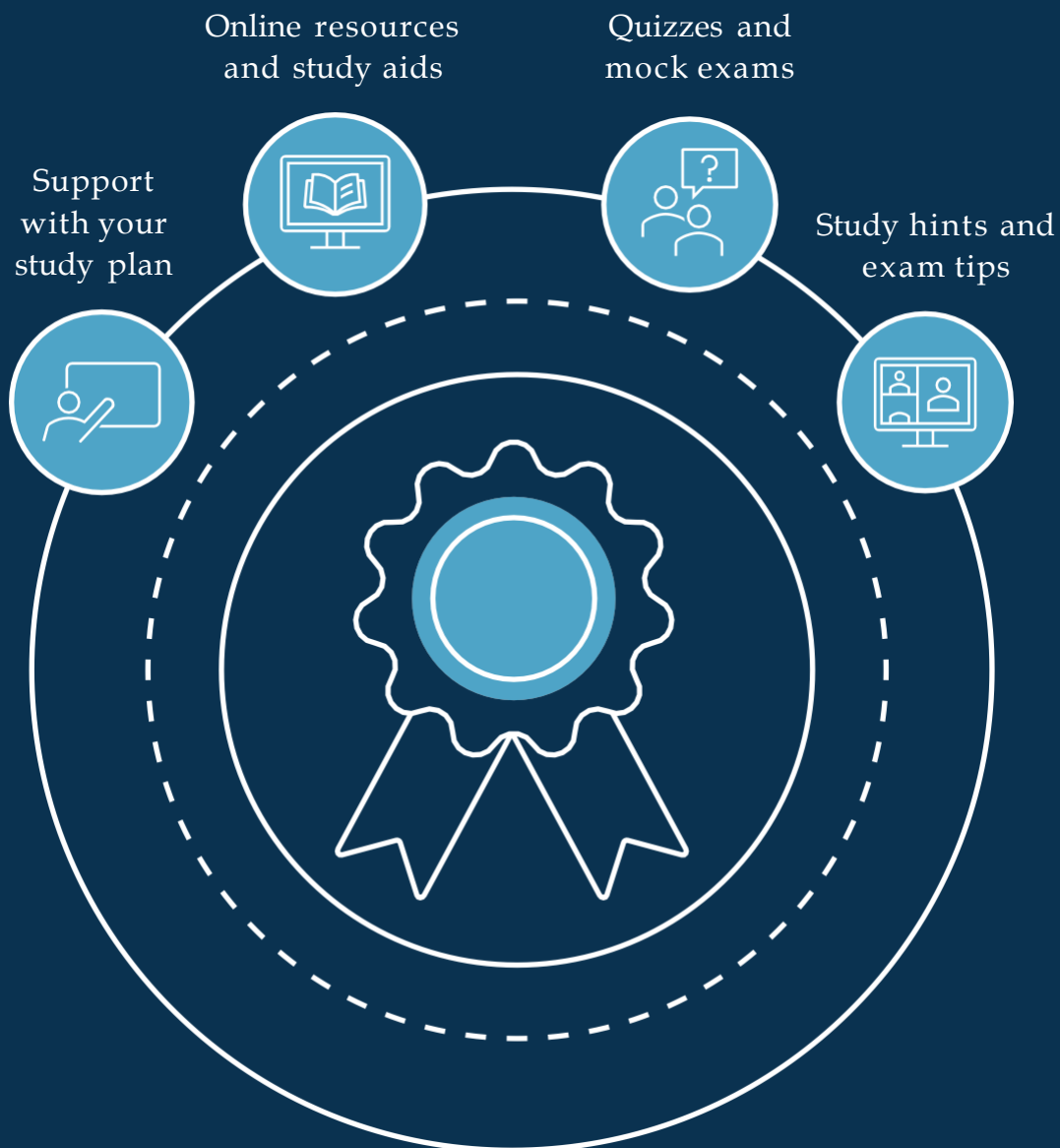


Revision Support

If you are studying for a CII qualification, we are aware of the level of commitment and dedication required in order to achieve the best possible result.

Whether you are starting your qualification journey with the Certificate In Insurance (CertCII) or moving on to the Diploma in Insurance (DipCII) our exam and revision support programmes are designed to help you manage your study time effectively and embed the learning to maximise success.

All courses are facilitated by one of our experienced CII qualified trainers who will bring the study text to life, practice the all-important exam techniques to ensure you pass first time.

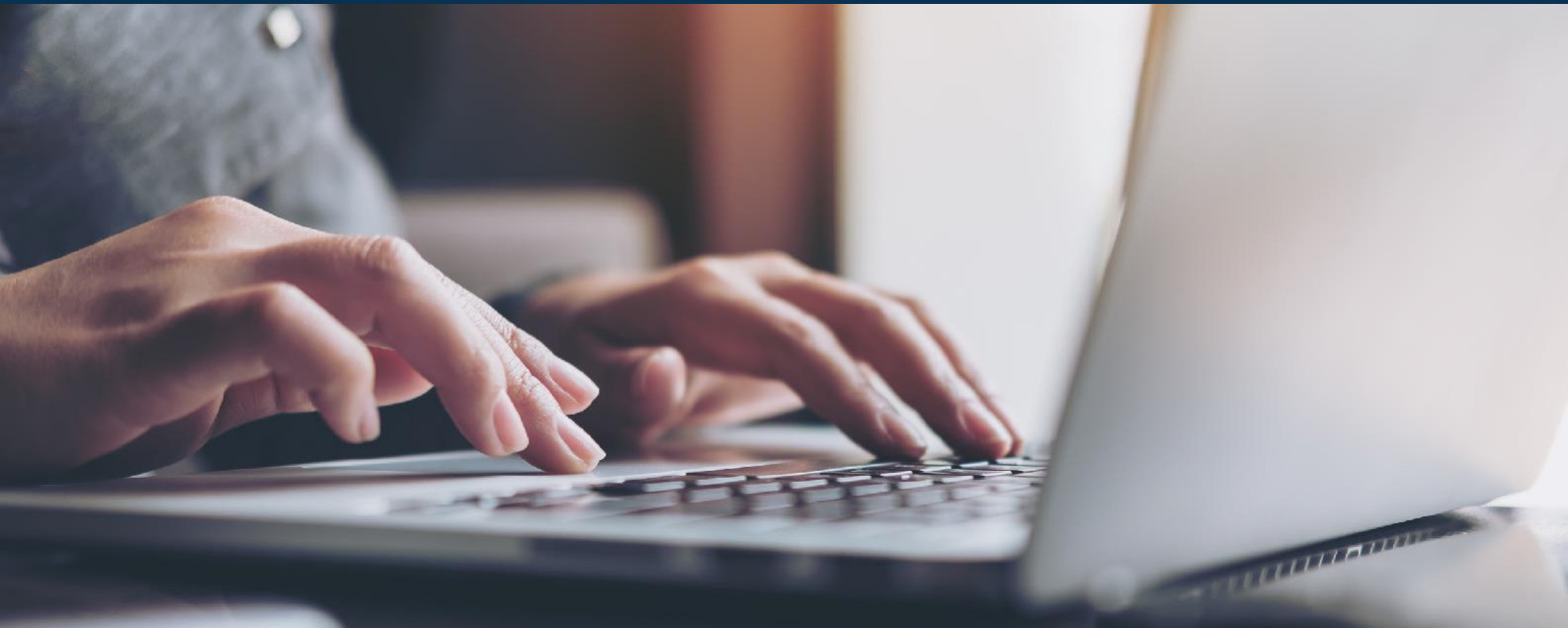
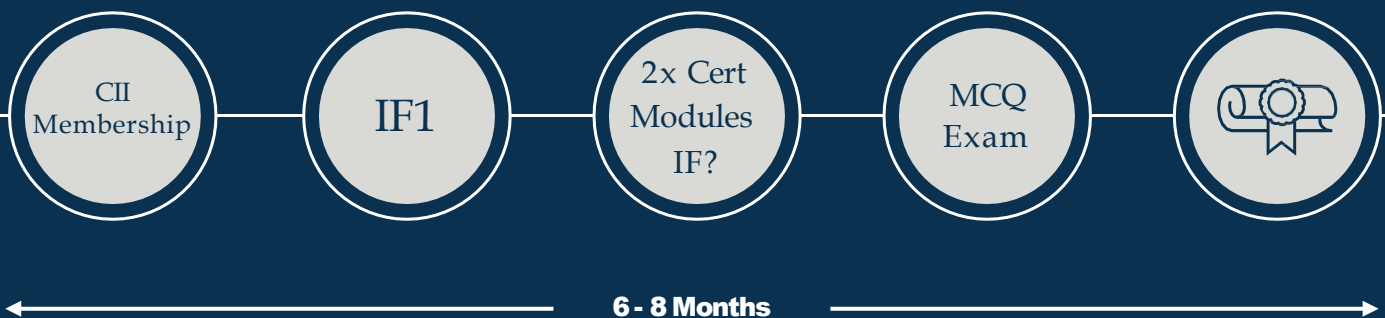


Your journey to Cert CII

Certificate in Insurance

The Level 3 Certificate in Insurance is a core qualification for insurance staff working across all sectors of the profession. The Certificate develops core knowledge and confidence of the key disciplines needed before you focus your subsequent studies and specialise according to your ambitions and career requirements. The IF1 unit is a compulsory module combined with 2 optional units of your choice (IF2/3/4/5/6/7/8/9/10/11).

Each unit is worth 15 credits and requires approximately 60 study hours. Certificate level units are assessed by multiple choice question (MCQ) exams. We are here to help you every step of the way, and can run the programme to suit your timescales.

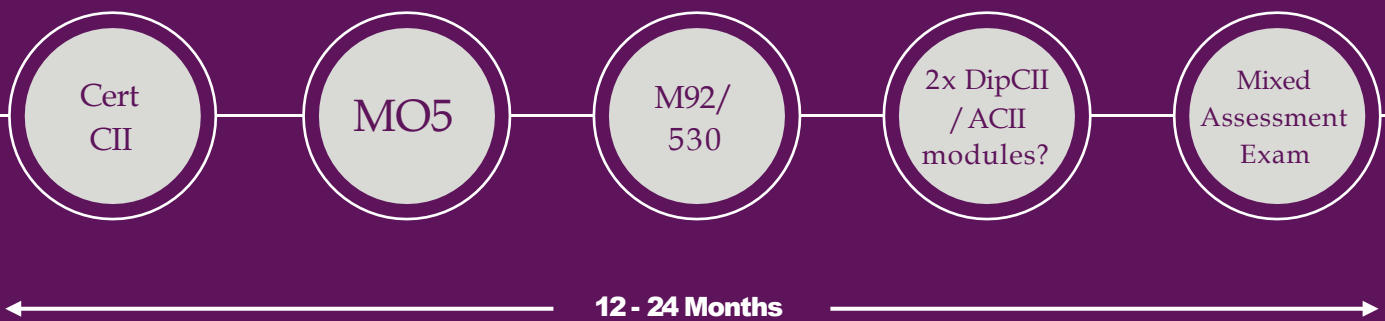


Your journey to DipCII

Diploma in Insurance

The Diploma in Insurance is a technical and supervisory qualification for insurance professionals and the logical progression from the Certificate in Insurance. The Diploma will provide you with a firm understanding of insurance fundamentals and will enable you to build towards advanced technical knowledge, thereby ensuring you have the means to function effectively in a challenging environment.

There are two compulsory modules for DipCII, MO5 followed by either M92 and/or 530 plus two additional modules chosen from the DipCII or ACII list (M21/66/67/80/81/85/86/90/91/93/94/96/97/98). Each unit is worth between 20-30 credits. MO5 is the most complex and requires approximately 120 hours of study compared to 80-100 hours for the other modules.



CertCII & DipCII Units

| Cert Unit | Title | Credits |
|----------------------------|--|-----------|
| IF1 | Insurance, Legal and Regulatory | 15 |
| Optional Units (select 2): | | |
| IF2 | General Insurance Business | 15 |
| IF3 | Insurance Underwriting Process | 15 |
| IF4 | Insurance Claims Handling Process | 15 |
| IF5 | Motor Insurance Products | 15 |
| IF6 | Household Insurance Products | 15 |
| IF7 | Healthcare Insurance Products | 15 |
| IF8 | Packaged Commercial Insurance | 15 |
| IF9 | Customer Service in Insurance | 15 |
| IF10 | Insurance Broking Fundamentals | 15 |
| IF11 | Introduction to Risk Management | 15 |

| Dip Unit | Title | Credits |
|----------------------------|--|--------------|
| M05 | Insurance Law | 25 |
| M92 or 530 | Insurance Business and Finance/Economics and Business | 25/30 |
| Optional Units (select 2): | | |
| M21 | Commercial Insurance Contract Wording | 20 |
| M67 | Fundamentals of Risk Management | 25 |
| M80 | Underwriting Practice | 20 |
| M81 | Insurance Broking Practice | 20 |
| M85 | Claims Practice | 20 |
| M86 | Personal Insurances | 20 |
| M93 | Commercial Property & Business Interruption Insurances | 20 |
| M94 | Motor Insurance | 20 |
| M96 | Liability Insurance | 20 |



Delivery Options and Fees

Certificate in Insurance



Virtual Fees: £5,995 + VAT

for up to 10 delegates

- 36 hours of study
- 18 x 2-hour live virtual sessions
- Access to online resources & study aids
- Study hints & exam tips
- Quizzes & mock exams
- Support with study plan
- Flexible timescales



In-Person Fees: £6,495 + VAT

+ travel costs for up to 10 delegates

- 5 full days of in-house face-to-face training
- Access to online resources & study aids
- Study tips & exam hints
- Quizzes & mock exams
- Support with study plan
- Flexible timescales

Sessions can be delivered virtually or in-person at a venue to suit you.

Diploma in Insurance



Virtual Fees: £7,375 + VAT

for up to 10 delegates

- 45 hours of study
- 20 x 2 1/4 hour live virtual sessions
- Access to online resources & study aids
- Study hints & exam tips
- Quizzes & mock exams
- Support with study plan
- Flexible timescales



In-Person Fees: £7,875 + VAT

+ travel costs for up to 10 delegates

- 7 full days of in-house face-to-face training
- Access to online resources & study aids
- Study tips & exam hints
- Quizzes & mock exams
- Support with study plan
- Flexible timescales





Talk to us

We'd love to discuss your specific training needs.

 [+44 \(0\) 117 248 2731](tel:+441172482731)

 heretohelp@zing365.co.uk

 zing365.co.uk